

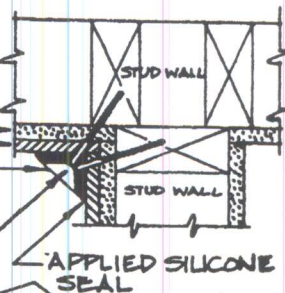
INSTALLATION DIAGRAM SHOWING METHOD OF SECURING THE MOUNTING BRACKET IN A STUD WALL.

1/2" W.P. GYP. WALL BOARD.

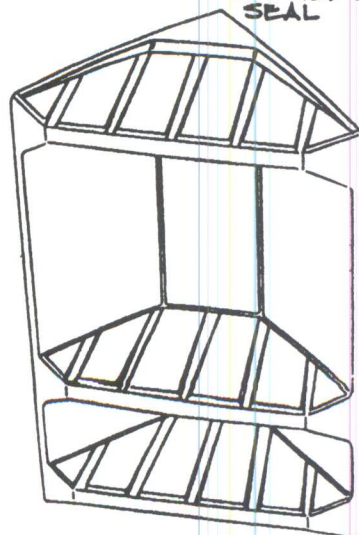
3/8" WALL PANEL.

ACCESSORY MOUNTING BRACKET.

PHILLIPS HEAD #8 x 3" WOOD SCREW - TWO SHOWN

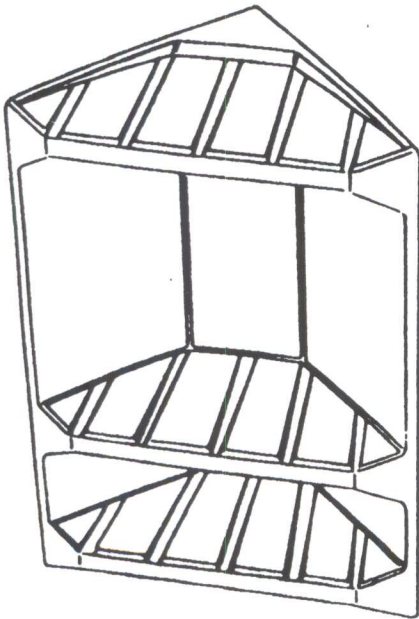


ACCESSORY MOUNTING BRACKET



PERSPECTIVE

INSTALLATION INSTRUCTIONS FOR CORNER SOAP AND SHAMPOO



Recommended tools and supplies for installation:

1. Clear silicone sealant.
2. Two (2) 2-1/2" x 1/8" No. 8 Phillips head wood screws.
3. A 3/16" masonry drill bit.
4. A 3/8" electric drill motor.

The **Diamond Corner Soap and Shampoo Accessory** has been designed with an integral hook and separate cast bracket which allows it to be fitted into any 90 degree corner wall configuration such as in a shower or above a bathtub.

Before actual installation, position the accessory to check for a true fit. An "out of square" wall condition may be compensated for by grinding the rear surfaces of the casting to achieve a flush fit.

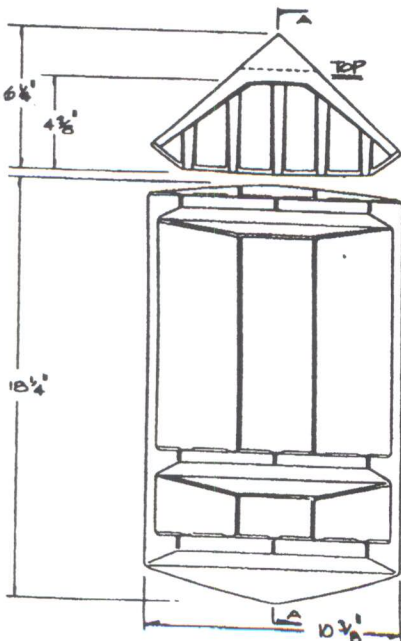
The following instructions detail the correct procedure for obtaining a secure attachment of the hanger bracket and installation of the accessory.

STEP 1

Using the recommended drill bit size, drill two (2) holes in the center of the mounting bracket as shown in the drawing.

STEP 2

Locate the hanger bracket in the wall corner. Use the pre-drilled holes in the bracket as a drill guide, and drill through the wall panels to the wood studs. **Do not drill into the wood studs.**



Continued ...

STEP 3

Remove the hanger bracket, and apply silicone sealant to the back of the hanger. Apply silicone to the screw shafts. Locate the hanger bracket, pressing it into the corner. Insert the screws through the bracket holes and into the wall holes.

STEP 4

Drive the screws firmly into the wall stud. **Do not overtighten the screws** as this could damage the bracket. Wipe off any excess silicone ensuring that a waterproof seal is obtained. Make sure that the bracket is firmly attached and does not freely move when vertical or horizontal pressure is applied.

Clean the wall surfaces with alcohol to remove any grease or wax residue that would prevent a good silicone bond.

STEP 5

The accessory can now be mounted on the hanger bracket. Apply a bead of silicone to the back of the accessory, approximately 1" from the edge. Also, apply a small amount of silicone on the top of the hanger bracket where the hanger bracket and the holder meet. *Use restraint in the amount of silicone that is applied.* Too much silicone will not allow the holder to seat to the wall.

STEP 6

To mount the holder, simply set it on the hanger and press it to the wall. the design of the system will allow the two pieces to grasp each other without effort. *Do not put an excessive amount of force on the hanger when the holder is being mounted as it can cause the mounting hanger to become loose or even break.*

STEP 7

Remove any excess silicone squeezed out on installation, making sure that a complete waterproof seal is obtained. The finished installation should be allowed to cure for several hours before actual use.